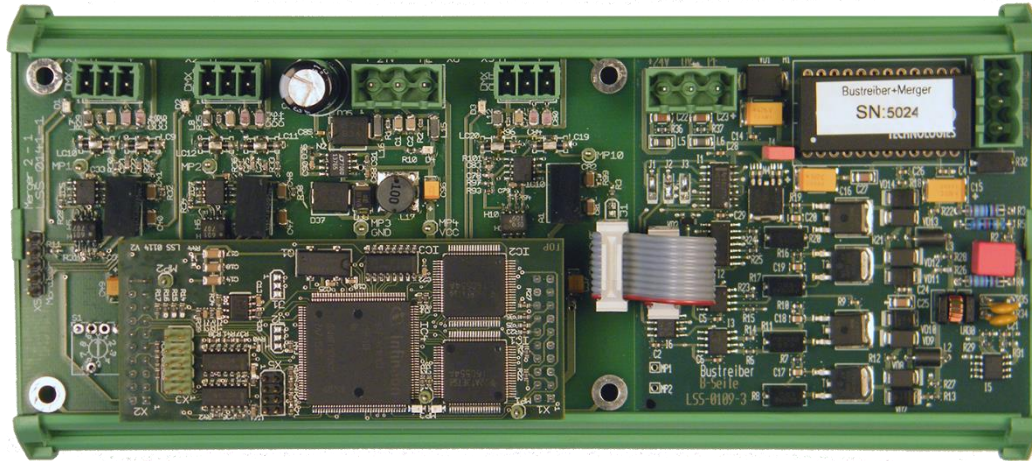


LSS



DMX-Bus Driver & Merger consisting of the Merger 2 in 1 and the Bus driver LSS-0109

Features:

- 2 DMX512-input electrically isolated by optocoupler
- 1 DMX512-output electrically isolated by optocoupler and amplified
- DMX-receiving, merging and output by microcontroller
- DMX-protocol detection by signal analysis
- DMX-output behavior adjustable via BCD switch is the same as in LSS Merger 6 in 2.
- EMC protection circuit on all inputs and outputs
- operating voltage 24 V DC
- Ready for 35mm DIN rail mounting

Technical Specifications:

DMX-Input	2x PHOENIX connectors 3,81mm, electrically isolated by optocoupler
DMX-Output	1x PHOENIX connector 3,81mm, electrically isolated by optocoupler The DMX-output is connected via X4 with module LSS-0109.
Indications	Power: LED green: operating voltage available DMX: LED yellow: DMX512 signal available Genuine DMX protocol detection by signal analysis. Extern: via X5 the LED's are available for external display
Power Supply	24 V DC / 250 mA / PHOENIX connector 3x 5,08 mm
RoHS	Approval
Dimensions (W x D x H)	200 x 65 x 90 mm
Weight	200 g
Order number	5024