

# LSS



## Orientation light KBL

### LED blue orientation light for installation on wall or junction boxes

The LSS orientation light *KBL* is a compact LED light. Modern LEDs are energy efficient, low maintenance and with a lifetime of over 100,000 hours. So an LED will be in use for more than 10 years, even in continuous operation.

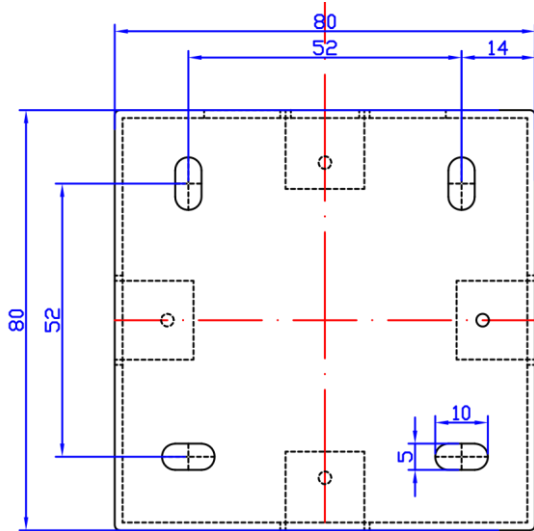
The *KBL* is available in two versions. In version 24N the *KBL* comes with a 24V DC power supply and is using pulse-width modulation for dimming directly on the device. To realize a control by using DMX signals, the *KBL 24N* can be equipped with the optional LSS *4-channel-KBL-dimmer* (No. 5058). In the second version 230N the *KBL* comes with an 110V to 250V AC power supply and it's not dimmable. Both versions are housed in a powder coated sheet steel case. Each version can be used as a surface/wall mounting or cavity wall / flush box mounting.

### Technical specification:

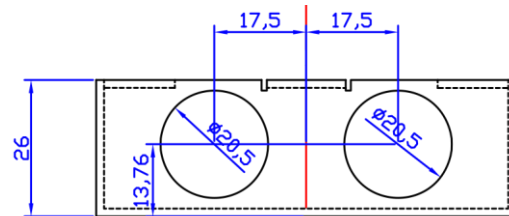
	Version 24N	Version 230N
<b>Power supply</b>	24V DC / 0,02A	100-250V AC / 0,02A
<b>Power</b>	0,5W	5VA
<b>IP code / Appliance class</b>	IP 30 / Class 3	IP 30 / Class 1
<b>Cable feed</b>	Screw connection M20	
<b>Luminous flux</b>	4x 1100mcd blue, beam angle circa 35° x 80°	
<b>Housing</b>	1,5mm sheet steel case / RAL9005 powder coated	
<b>RoHS directive</b>	Confirm	
<b>Dimensions</b>	(W x H x D in mm) 80 x 80 x 25mm (without wall mounted case) (W x H x D in mm) 80 x 80 x 60mm (with wall mounted case)	
<b>Weight</b>	170g without power supply cable	
<b>Order numbers</b>	Version 24N: L01002 Wall mounted case: L01003	Version 230N: L01006

## Dimensions

### Base wall mounted case



### Drill holes power supply cable



### Mounting plate

