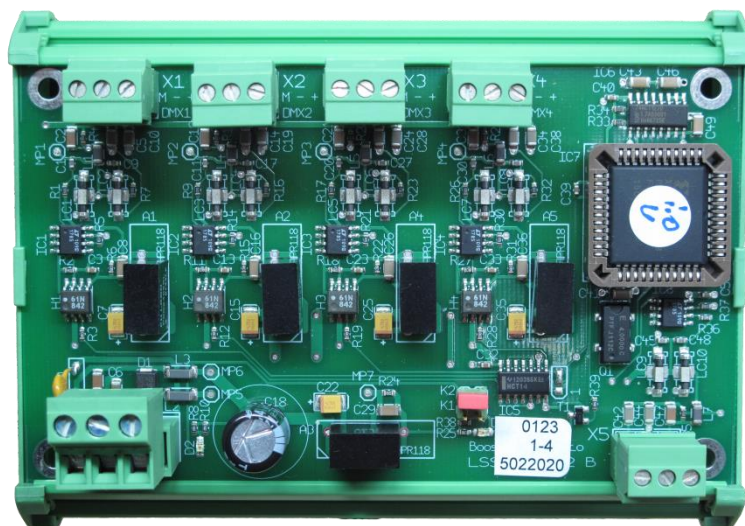


LSS



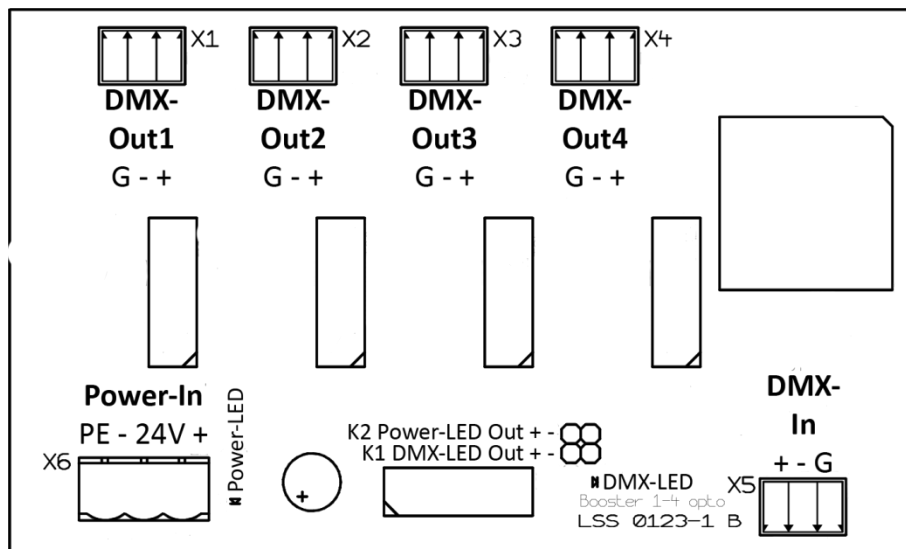
DMX-Booster 1 in 4

The *LSS DMX Booster 1 in 4* is an amplifier and distributor of DMX signals. Incoming signals are amplified and distributed into four independent outputs. All DMX outputs are isolated as the input by opto-isolators and EMC protection circuit. The *DMX Booster 1 in 4* has DMX signal detection and requires no additional configuration. The DMX Booster can be installed quickly and easily by bolts or with housing on 35mm DIN rail. For operation a 24V DC power supply is needed.

Technical specifications:

DMX input	1x PHOENIX connector, electrical isolated by opto-isolators
DMX outputs	4x PHOENIX connector, electrical isolated by opto-isolators
LEDs	LED for power supply and DMX-signal input Additional external LEDs can be connected.
Power supply	24V DC / 60-80mA
RoHS Directive	Confirmed
Dimensions	(B x T x H) 123 x 64 x 90mm
Weight	114 gram
Order number	5022

Ports



LEDs

LED	Color	Description
Power	Green	Power is available
DMX	Yellow	DMX512 on DMX-In is available real DMX protocol detection by signal analysis

Connecting with external LEDs

External DMX-LED

Use connector K1 to connect an external DMX-LED.

External Power-LED

Use the connector K2 to connect an external Power-LED.



Ensure the correct mapping of the poles!

External connection and onboard LEDs are connected in series. If the external port is not used, it must be bypassed with a jumper to ensure the operation of the onboard LED.